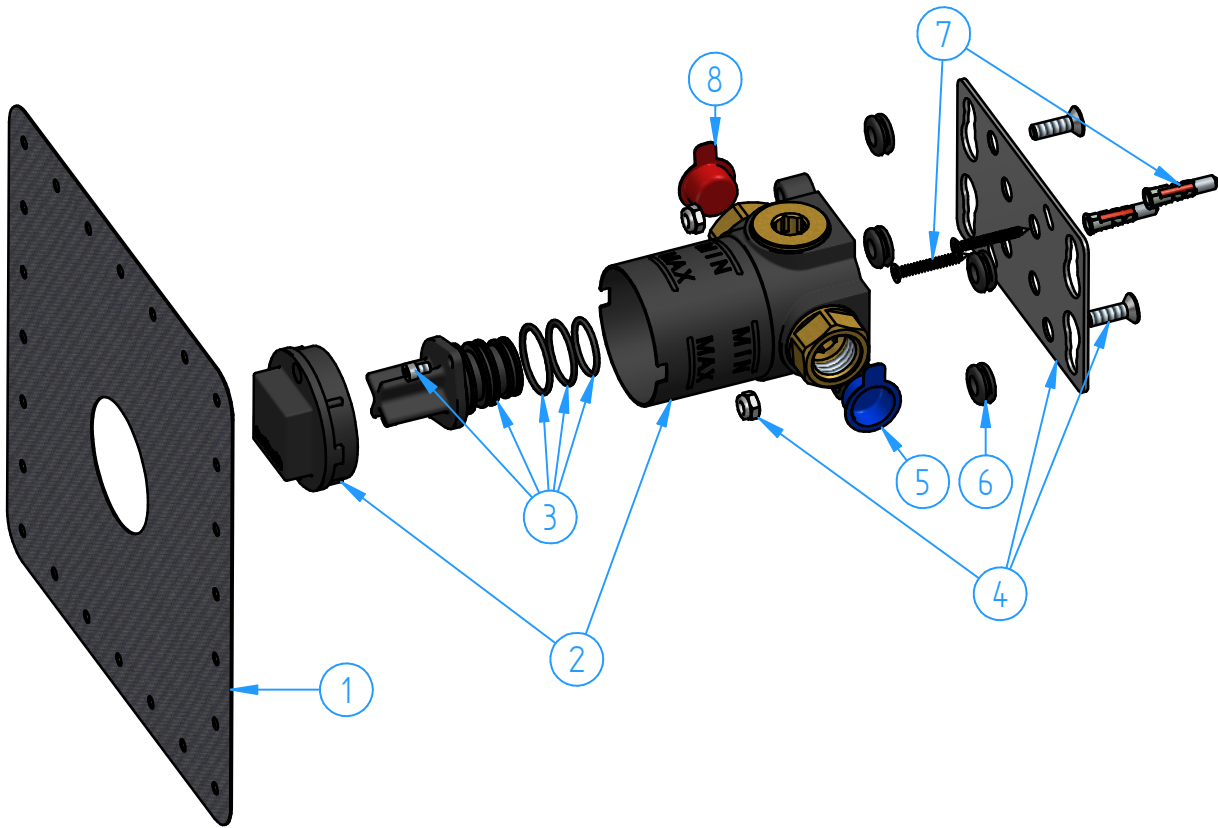
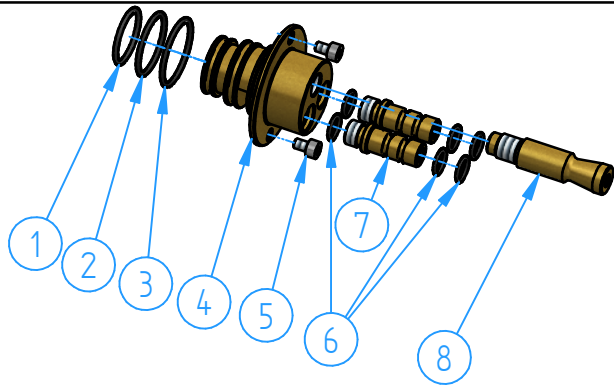


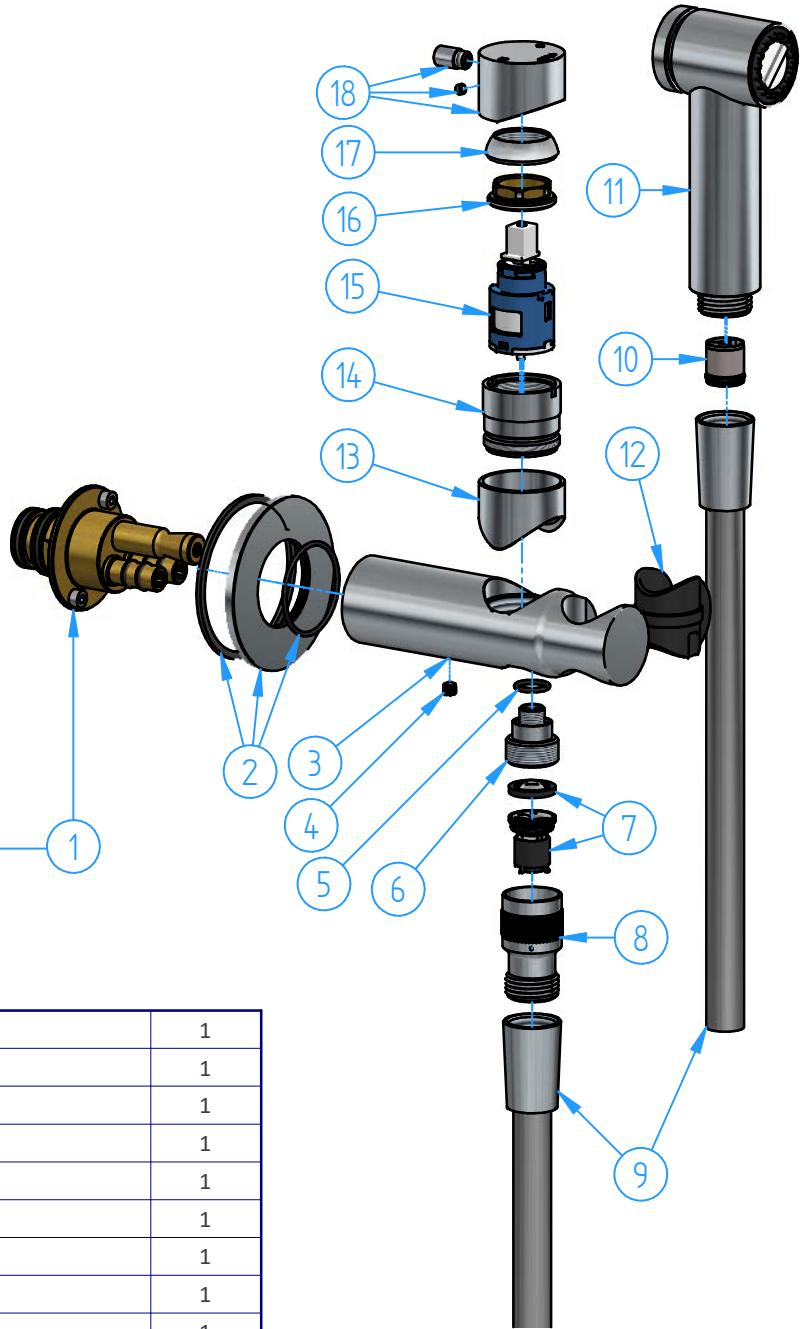
2	HBKHDS3-00	Concealed part for "Shut-off" kit (KHDS3)	1
1	KHDS3EXT-00	External parts for KHDS3	1
ID Nr	Code	Description	Pcs



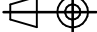
8	HBCB105-21	Red plug	1
7	HB105-005	Fixing kit	1
6	HB105-004	Shock/noise absorber set	1
5	HBCB105-20	Blu plug	1
4	HBCB131-002	Installation flange set	1
3	HBCB105-002	Plug set	1
2	HBKHDS3-001	Preassembled set for HBKHDS3-00	1
1	HB131-02	Wall gasket	1
ID Nr	Code	Description	Pcs



8	KHDS2-02	Mixer pin	1
7	KHDS2-08	Water connection	2
6	BR003-11	O.ring 7,65x1,78	6
5	HBCB105-09	Screw M4x6	2
4	KHDS3-01	Connector body	1
3	HBCB105-18	O.ring 25x2	1
2	HBCB105-17	O.ring 23x2	1
1	AR095-04	O.Ring 20x2	1
ID Nr	Code	Description	Pcs



18	KHDS2-001	Handle set	1
17	L004-04	Dome	1
16	L004-05	Locking nut for cartridge	1
15	B002-001	Cartridge	1
14	L004-03	Locking nut for cartridge cover	1
13	KHDS2-07	Cartridge cover	1
12	CB077-10	Anti-scratch plastic insert	1
11	FKM18-002	Pull-out hand shower	1
10	AR077-005	Check valve CV15-FR with flow regulator 2,0 gpm	1
9	M010-00	Flexible hose	2
8	KHDS2-16	Pressure limiter housing	1
7	KHDS2-004	Pressure limiter DS 2 Bar	1
6	B077-25	1/2" Connection	1
5	BR005-14	O.ring 10.82x1.78	1
4	M437-10	Dowel M5x5	1
3	KHDS2-14	Mixer body	1
2	KHDS2FL70-00	Flange set	1
1	KHDS3-001	Connector set	1
ID Nr	Code	Description	Pcs

			Sheet 1 of 1				
			Scale 1:3				
N°	REVIEW		Date				
Description  Shut-off kit with mixer, push-button metal hand shower and 100 cm flexible hose			Material				
			Weight 0 kg				
Code KHDS3-00	Date of issue 20/01/2025	Chamfers not quoted 0.5x45°		Finishing <table><tr><td>SM Grinding</td><td>LU Polishing</td><td>CR GN</td></tr></table>	SM Grinding	LU Polishing	CR GN
SM Grinding	LU Polishing	CR GN					
hotbath italian bathroomware							

This drawing is property reserved of Hotbath Srl.  
Without express authorization, the copying, distribution and utilization of this document as well as the communication to others is prohibited